



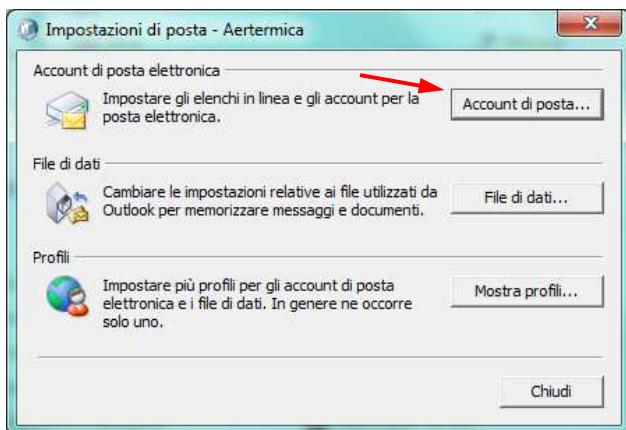
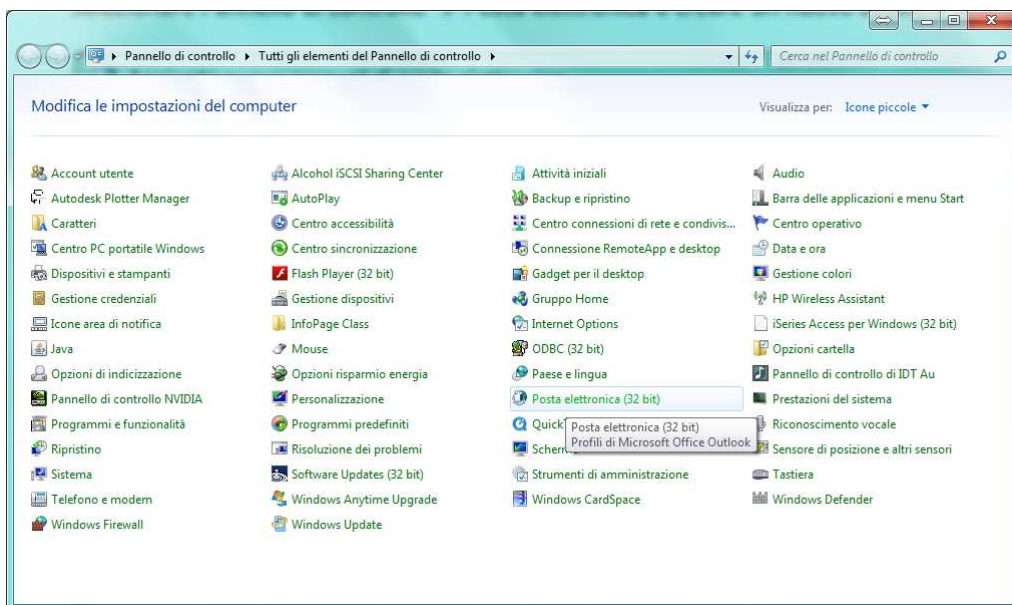
Configurazione account Exchange su Outlook 2007

Redatto da Staff NETisON

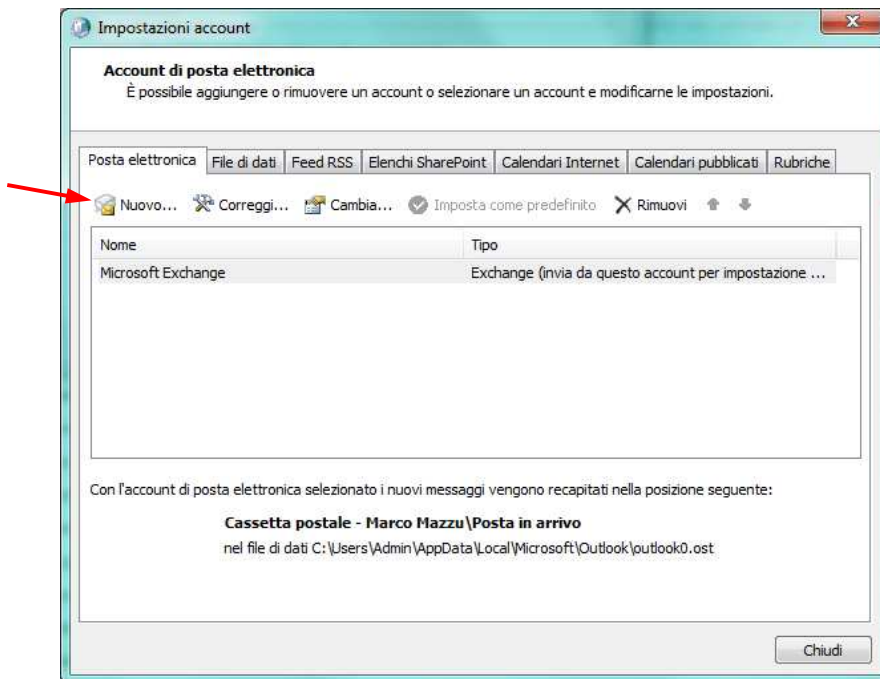
Brescia, 26 Maggio 2014



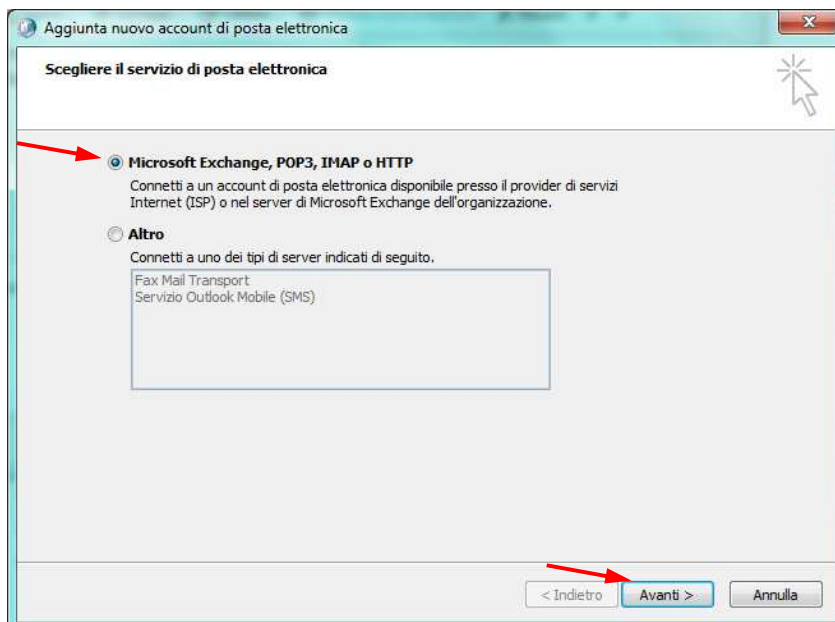
Selezionare Pannello di controllo → Posta elettronica e creare un nuovo account di posta



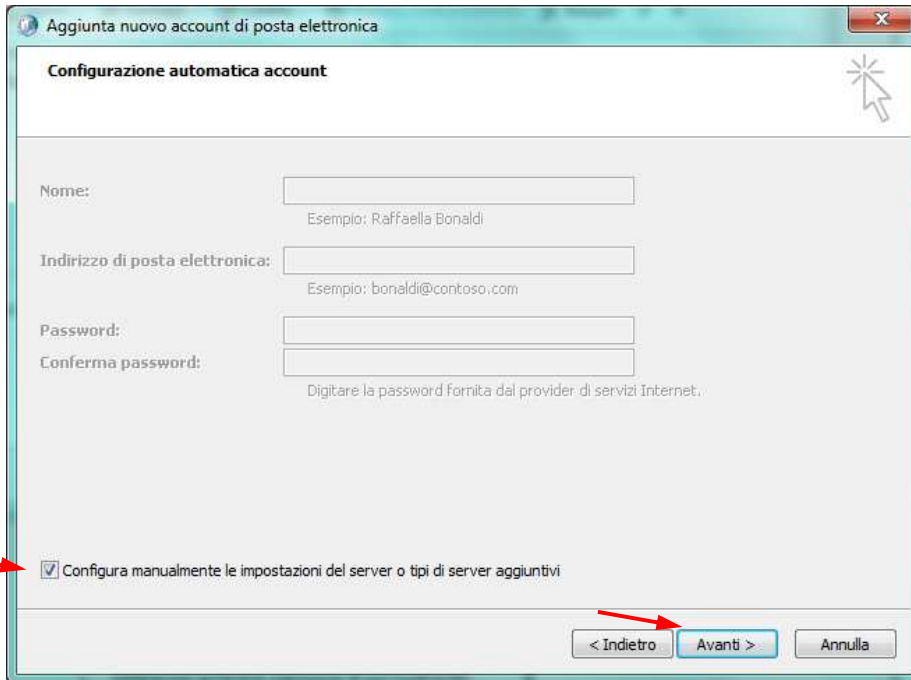
Cliccare su Nuovo



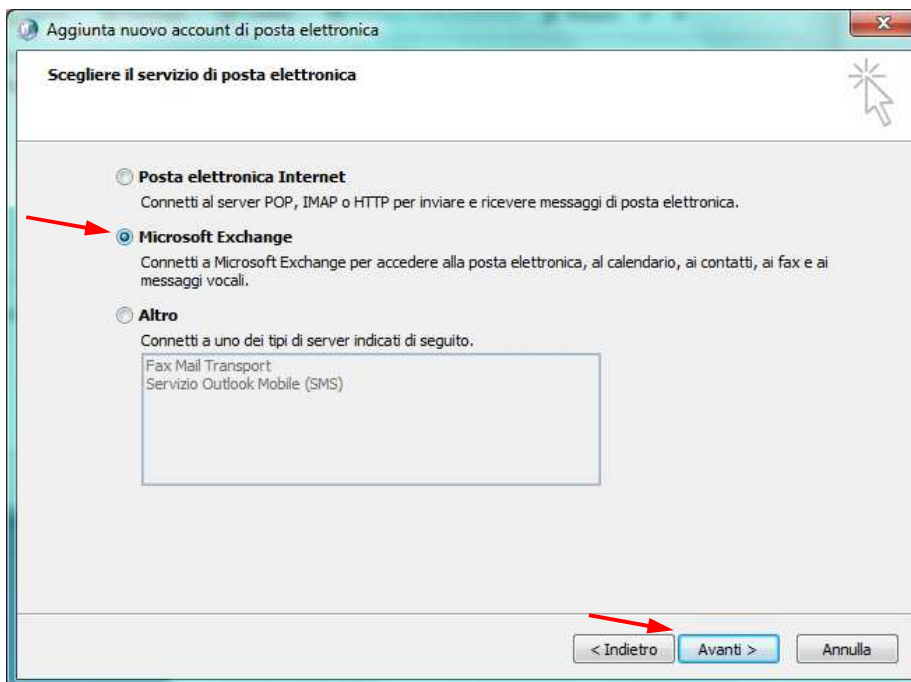
Selezionare Microsoft Exchange → Avanti



Selezionare Configura manualmente ... → Avanti



Selezionare Microsoft Exchange → Avanti



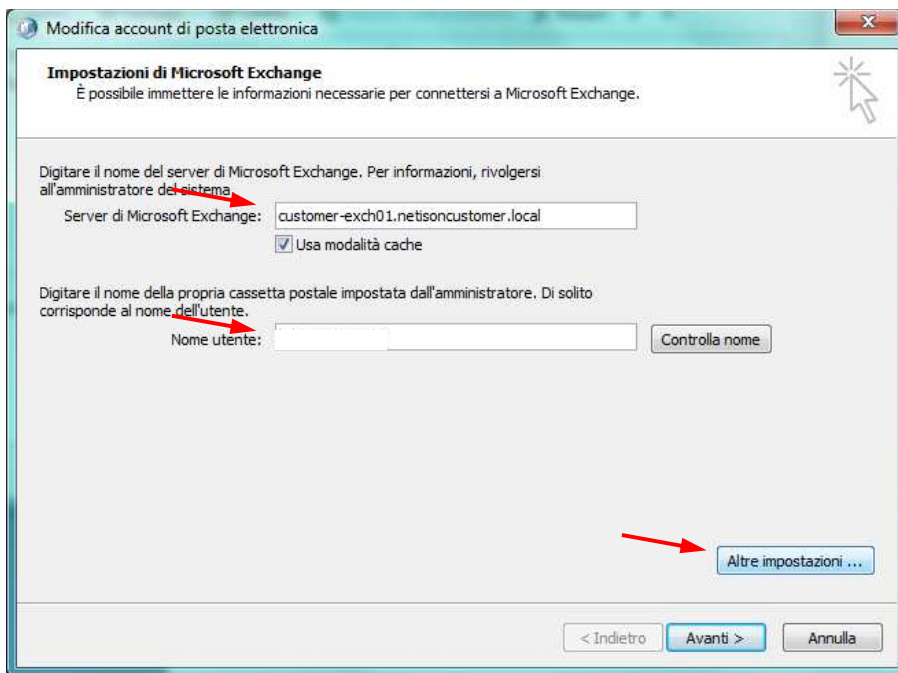


Inserire i valori riportati in figura

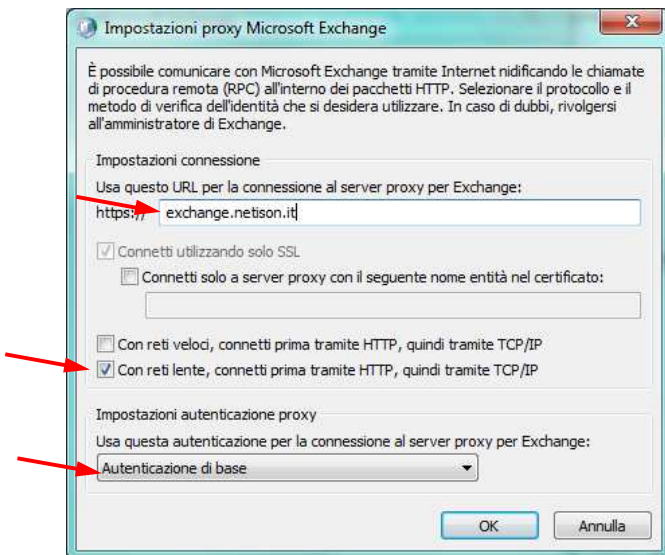
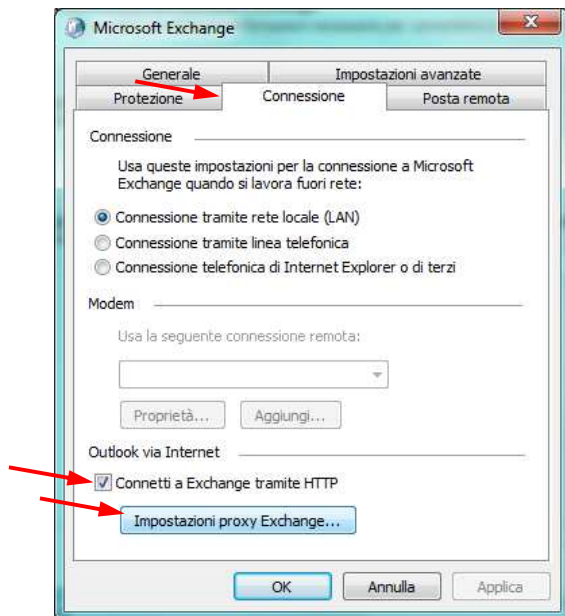
Server: customer-exch01.netisoncustomer.local

Nome Utente: *sigla-iniziale del nome.cognome* (esempio: la configurazione per l'utente Bianca Rossi della ditta Verdi sarà ve-b.rossi)

Click su Altre impostazioni...



Selezionare e configurare le voci come riportato in figura



OK → OK → Avanti → Chiudi